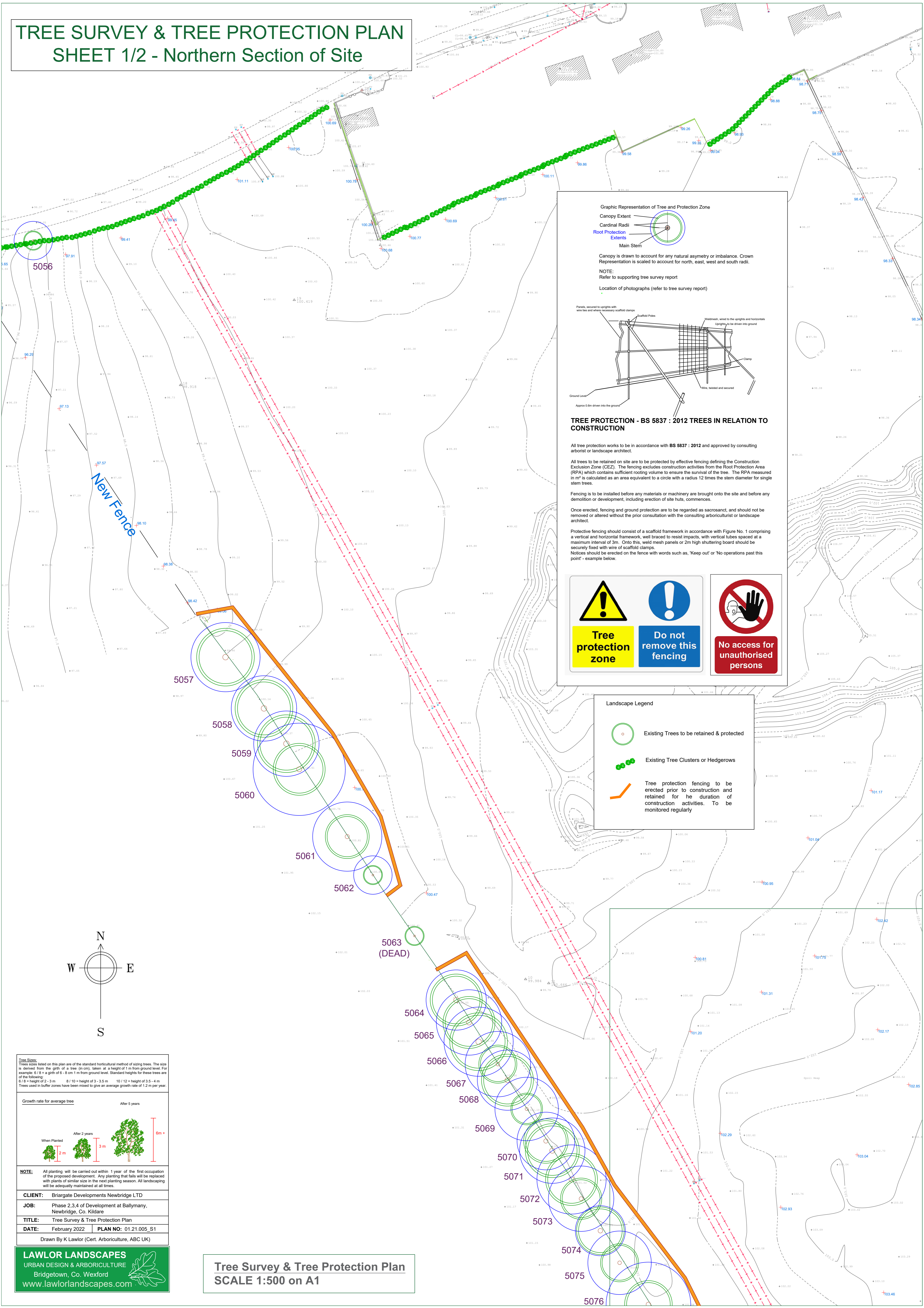


TREE SURVEY & TREE PROTECTION PLAN

SHEET 1/2 - Northern Section of Site



Graphic Representation of Tree and Protection Zone

Canopy Extent
Cardinal Radii
Root Protection Extents
Main Stem

Canopy is drawn to account for any natural asymmetry or imbalance. Crown Representation is scaled to account for north, east, west and south radii.

NOTE:
Refer to supporting tree survey report
Location of photographs (refer to tree survey report)

Panel, secured to uprights with wire ties and where necessary scaffold clamp
Scaffold Poles
Weldmesh, wired to the uprights and horizontals
Uprights
Clamp
Wire, twisted and secured
Ground Level
Approx 6m drawn into the ground

TREE PROTECTION - BS 5837 : 2012 TREES IN RELATION TO CONSTRUCTION

All tree protection works to be in accordance with BS 5837 : 2012 and approved by consulting arborist or landscape architect.

All trees to be retained on site are to be protected by effective fencing defining the Construction Exclusion Zone (CEZ). The fencing excludes construction activities from the Root Protection Area (RPA) which contains sufficient rooting volume to ensure the survival of the tree. The RPA measured in m² is calculated as an area equivalent to a circle with a radius 12 times the stem diameter for single stem trees.

Fencing is to be installed before any materials or machinery are brought onto the site and before any demolition or development, including erection of site huts, commences.

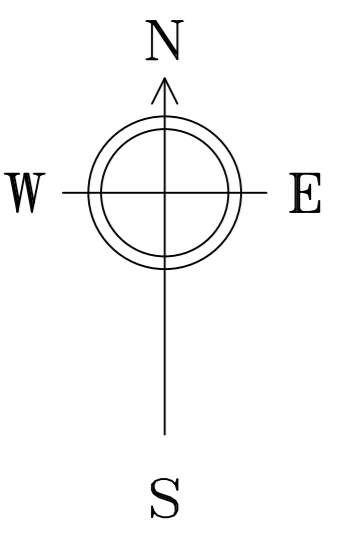
Once erected, fencing and ground protection are to be regarded as sacrosanct, and should not be removed or altered without the prior consultation with the consulting arboriculturist or landscape architect.

Protective fencing should consist of a scaffold framework in accordance with Figure No. 1 comprising a vertical and horizontal framework, well braced to resist impacts, with vertical tubes spaced at a maximum interval of 3m. Onto this, weld mesh panels or 2m high shuttering board should be securely fixed with wire of scaffold clamps.

Notices should be erected on the fence with words such as, 'Keep out' or 'No operations past this point' - example below.

Landscape Legend

- Existing Trees to be retained & protected
- Existing Tree Clusters or Hedgerows
- Tree protection fencing to be erected prior to construction and retained for the duration of construction activities. To be monitored regularly



Tree Sizes:
Trees listed on this plan are of the standard horizontal method of sizing trees. The size is derived from the girth of a tree (in cm), taken at a height of 1 m from ground level. For example: 6 / 8 = a girth of 6 - 8 cm 1 m from ground level. Standard heights for these trees are of the following:
6 / 8 = height of 2 - 3 m 8 / 10 = height of 3 - 3.5 m 10 / 12 = height of 3.5 - 4 m
Trees used in buffer zones have been mixed to give an average growth rate of 1.2 m per year.

Growth rate for average tree	After 5 years
When Planted 2 m	After 2 years 3 m
	After 5 years 6m +

NOTE: All planting will be carried out within 1 year of the first occupation of the proposed development. Any planting that fails will be replaced with plants of similar size in the next planting season. All landscaping will be adequately maintained at all times.

CLIENT: Briargate Developments Newbridge LTD
JOB: Phase 2,3,4 of Development at Ballymany, Newbridge, Co. Kildare
TITLE: Tree Survey & Tree Protection Plan
DATE: February 2022 **PLAN NO:** 01.21.005_S1
Drawn By K Lawlor (Cert. Arboriculture, ABC UK)



Tree Survey & Tree Protection Plan
SCALE 1:500 on A1